

Network Sensor Manager

Description

Network Sensor Manager (NSM) combined with our award winning Sensor Hub environmental monitoring devices create the most comprehensive physical monitoring solution on the market. The NSM is provided as an optional tool to assist with installations that have multiple Sensor Hubs in one or multiple locations.

The summary view gives users quick access to one screen identifying multiple Sensor Hub devices. This allows easy access during an alarm condition. During an alarm condition the icon changes to either yellow (indicating a warning condition) or red (indicating a critical condition).

Network Sensor Manager gives the administrator the ability to change each Sensor Hub configuration, from security to threshold settings, on one or multiple devices with a click of a mouse. Spend less time wondering when the next problem will occur, instead use the NSM to discover the problem area before it becomes one.

Network Sensor Manager Features

- View multiple Sensor Hubs and what the status is of each unit on one screen
- Summary View allows for the arranging of Sensor Hubs into groups by location
- Administration control over multiple devices allows for mass configurations
- Export raw data to use in other applications such as an external database

Coming Soon

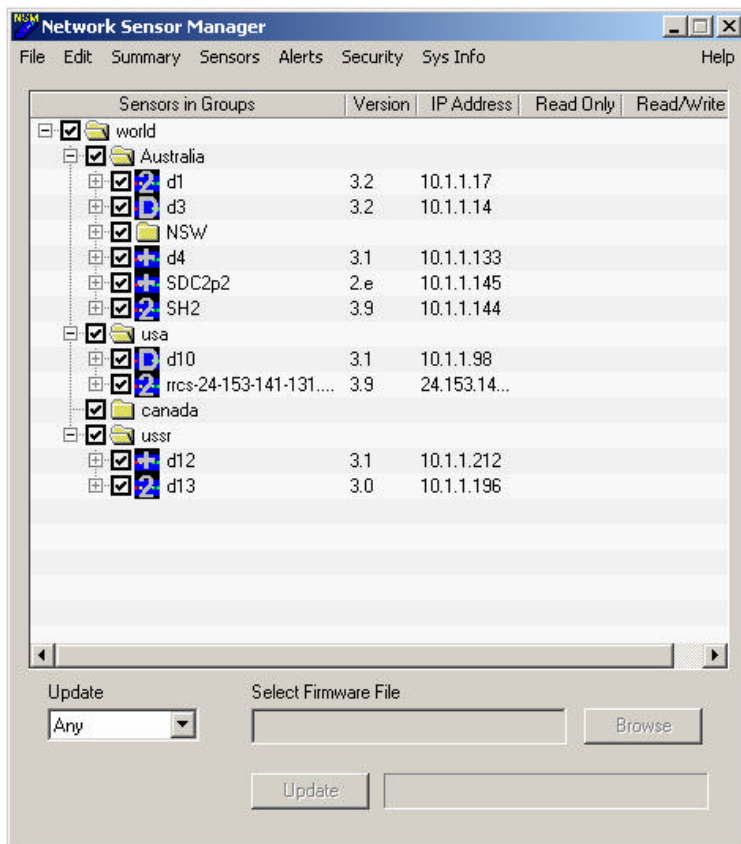
- Reporting capability helps to find trends and quickly deal with trouble spots
- Graphing tool allows the user to graph multiple devices and sensors on one graph
- Easily access all past alarms by date, alarm type, or device

Network Sensor Manager Benefits

- Easy set-up means less downtime and more time spent responding to issues
- Real-time response of alarms as they happen
- Administrators are more productive by using one tool to control multiple Sensor Hubs.

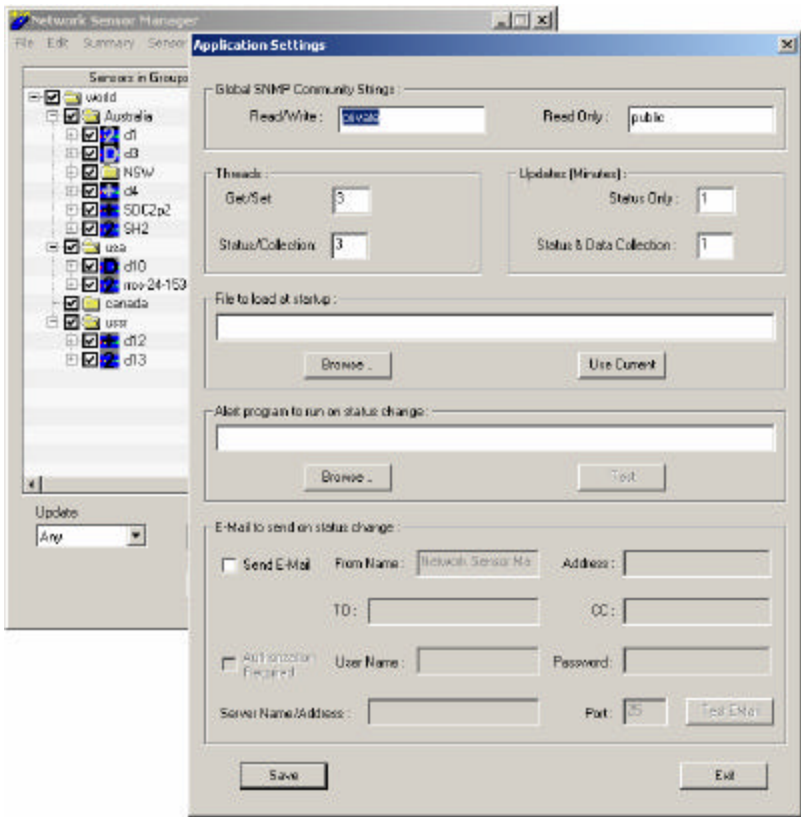
Summary

Window



User Interface

Systems Settings Window



Data Collection Window

